

# RTX300

X-Ray Inspection Equipment

xi



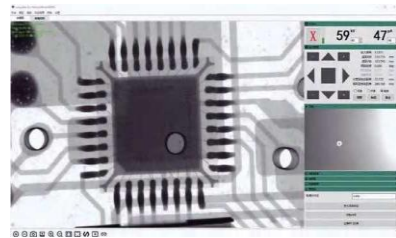



# RTX300

Widely applied for BGA, CSP, Flip Chip, LED, Fuse, Diode, PCB, Semiconductor, Battery Industry, Small Metal Casting, Electronic Connector Module, Cables, Aerospace Components, Photovoltaic Industry, etc.

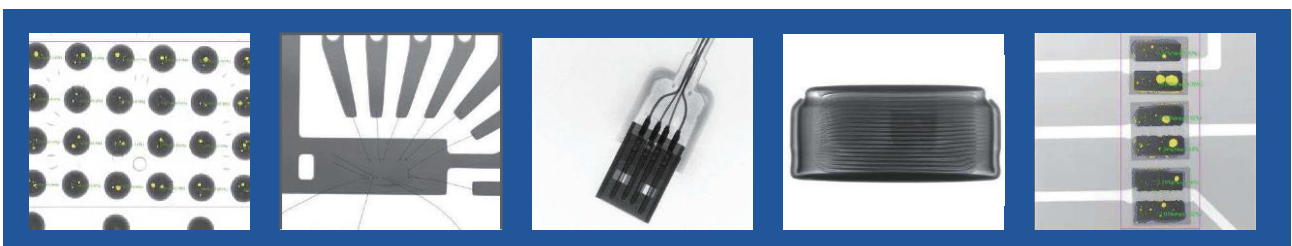
## Application Fields



## Functions and Features

|   |   |   |
|---|---|---|
| <p><b>1</b> Large Size Inspection Table<br/>Laser Pinpoint For Precise Location</p>  | <p><b>2</b> Accurate Control, CNC Programming<br/>Automatic Positioning</p>  | <p><b>3</b> FPD Tilting <math>\pm 25^\circ</math></p>  |
| <p><b>4</b> Safely Electromagnetic Interlock</p>                                     | <p><b>5</b> Fingerprint Access Management System</p>                         | <p><b>6</b> Real-time Monitoring of Radiation</p>      |

## Inspection Images





## Technical Parameters and Specifications

### System Summary

|                |                           |                      |                           |
|----------------|---------------------------|----------------------|---------------------------|
| Footprint      | 1280(W)×1220(D)×1615(H)mm | Plywood Packing Size | 1800(W)×1400(D)×1800(H)mm |
| Machine Weight | 1100 kg                   | Packing Weight       | 1250 kg                   |
| Power Supply   | AC 110/220V, 50/60Hz      | Power Consumption    | 1.0 kW                    |

### X-Ray Tube

|           |                     |                 |     |
|-----------|---------------------|-----------------|-----|
| Tube Type | Sealed              | Max. Power      | 8W  |
| Voltage   | 0-90kV (Adjustable) | Focus Spot Size | 5µm |

### Imaging Detector

|                          |                           |                      |       |
|--------------------------|---------------------------|----------------------|-------|
| Detector                 | Flat Panel Detector (FPD) | Pixel Size           | 85µm  |
| Effective Detection Area | 129*129mm                 | Frame Rates          | 30fps |
| Pixel Matrix             | 1536*1536mm               | System Magnification | 600X  |

### Software

|                          |  |
|--------------------------|--|
| Auto-measuring           | BGA Soldering Voids Auto-measuring and Support Data/Graphic Output           |
| Multiple Measuring Tools | Support Measuring Distance, Angle, Diameter, Polygon, PTH filling rate, etc. |
| CNC Mode                 | CNC Programmable Inspection, Easy Operation and User Friendly                |
| Real-time Display        | Real-time Displaying the Working Data of Voltage, Current, Angle, Date, etc. |
| Navigation               | Convenient Target Point Positioning System                                   |

### Motion Control System

|                          |                                |
|--------------------------|--------------------------------|
| Movement Control         | Joystick, Keypad & Mouse       |
| Max. Loading Area/Weight | 520*420mm                      |
| Max. Inspection Area     | 460*400mm                      |
| Tilting Angle            | ±25°                           |
| Manipulator              | 5-axis withX / Y / Z1 / Z2 / T |

### Industrial PC

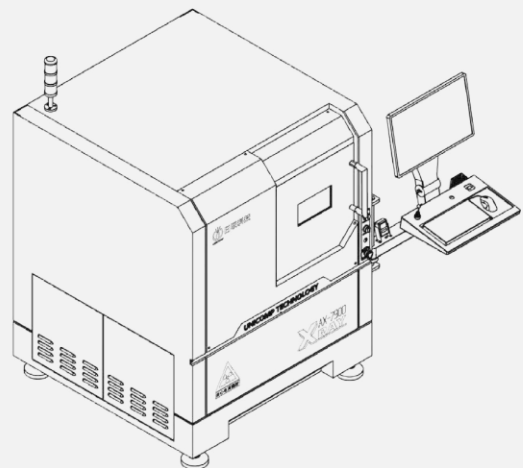
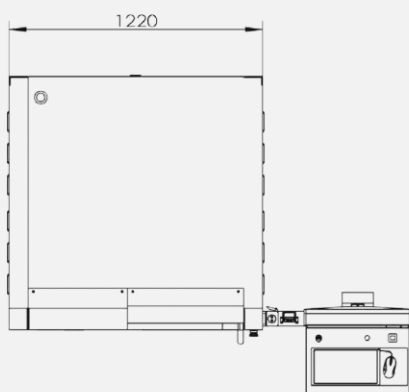
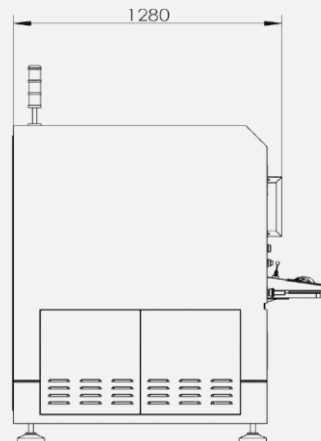
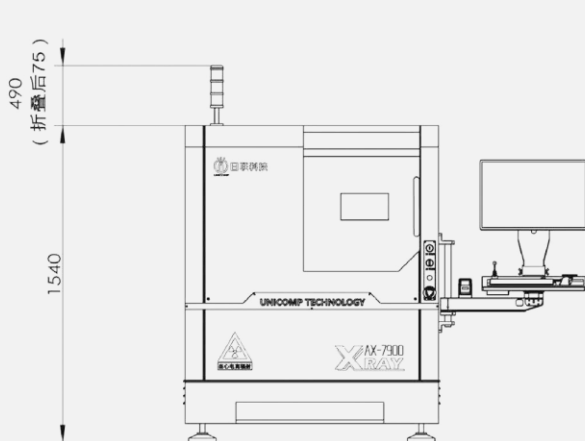
|           |                      |
|-----------|----------------------|
| Monitor   | 24'' FHD LCD Display |
| System OS | Windows 10 64bit     |
| Hard disk | 1TB                  |
| RAM       | 16GB                 |
| CPU model | Intel i7 Processor   |

### Other Features

|                      |  |                  |  |
|----------------------|--|------------------|--|
| Energy Saving        | X-Ray Auto-off when it's out of work over than 5 minutes           | X-Ray Safety     | <1µSv/h (Meets All International Standards)                                      |
| Authority Management | Fingerprin Access Management System, an Suppor Password Accessing. | Safety Operation | Electromagnetic Interlock, Warning Light and Real-time Radiation Leakage Monitor |

\* Specifications are subject to change without notice, All trademarks are the property of the system maker.

Dimensions and Appearance



**Corporate Office**

**RAY TECH SINGAPORE PTE LTD**

1 Tai Seng Avenue #05-09 (Taiseng Exchange – Tower A)  
Singapore 536464

**Factory**

**RAY TECH (MALAYSIA) SDN BHD**

2, Jalan SILC 4/1, Kawasan Perindustrian SILC, 7900 Iskandar Puteri, Johor,  
Malaysia