

# RTX210

X-Ray High speed Counting System



# RTX210

## Application Fields

<i>Reels</i>	<i>Accuracy</i>	<i>Others Components</i>	<i>Accuracy</i>
01005	99.99%	Transistors	99.99%
0201	99.99%	Bulks	99.99%
0402	99.99%	ESD Packages	99.9%
0603	99.99%	Tubus	100%
0805	99.99%	JEDEC TRAY	100%
1206	99.99%	Other Resistance & Capacity	99.99%

## Functions and Features



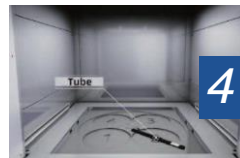
**1** Fingerprint Access Management and Real-time Monitoring of Radiation



**2** Anti-interference Counting Algorithm



**3** Embedded Sensors for Identifying Reels



**4** AI Technology for Counting Different Components

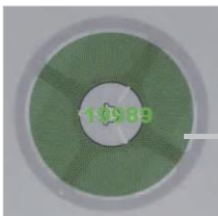


**5** Intelligent QR Reading System

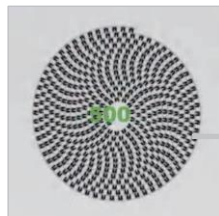


**6** Full Anti-pinch Hand System

## Inspection Images



01005



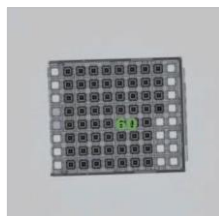
Chips



Abnormal Components



ESD / HSC



TRAY



Bulks

## Technical Parameters and Specifications

### System Summary

Footprint	800(W)X800(D)X1900(H)mm	Plywood Packing Size	1150(W)×1110(D)×2150(H)mm
Machine Weight	780 kg	Packing Weight	980 kg
Power Spupply	AC 110-220V, 50/60Hz	Power Consumption	Max. 1.5kW

### X-Ray Tube

Tube Type	Sealed	Current	Max. 700 μA
Voltage	80kV	Focus Spot Size	0.03 mm

### Imaging Detector

Detector	Flat Panel Detector (FPD)	Pixel Size	139 μm
Effective Inspection Area	430*430mm	Frame Rates	2 fps
Pixel Matrix	3072*3072 pixel	AD Conversion	16 bits

### Inspection Ability

Tape & Reel size	7"-17"
Scan Height	≤80mm
Inspection Min. Component	01005
Inspection Accuracy	99.99%
Inspection Speed	< 10s/Tape & Reel (7"-17") < 10s (7"*4 Tape & Reel )

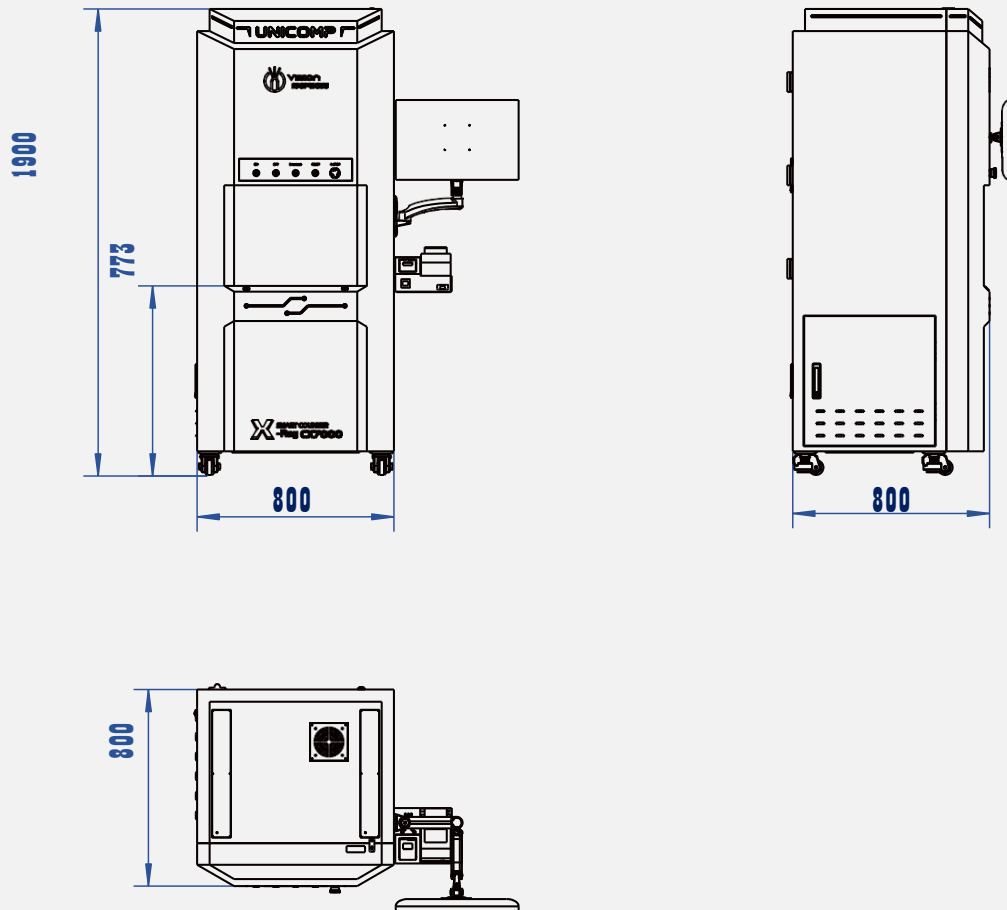
### Industrial PC

Monitor	24" FHD LCD Display
System OS	Windows 10 64bit
Hard Disk	256G (SSD) + 1T (HDD)
RAM	16 GB
CPU Model	Intel i7 Processor
Support Connection with MES, ERP and WMS Intelligent Storage System.	

### Other Features

Door Open	Auto-door, Anti-Pinch	Feeding Method	Manual
Radiation Monitoring	Safety Protection, Real-time Monitoring of Radiation	X-Ray Safety	≤0.5μSv/h (Meets All International Standards)
Accessories	Embedded barcode camera reader, hand-held barcode sanner	Authority Management	Fingerprint Access Management System, and Support Password Accessing.

Dimensions and Appearance



**Corporate Office**

**RAY TECH SINGAPORE PTE LTD**

1 Tai Seng Avenue #05-09 (Taiseng Exchange – Tower A)  
Singapore 536464

**Factory**

**RAY TECH (MALAYSIA) SDN BHD**

2, Jalan SILC 4/1, Kawasan Perindustrian SILC, 7900 Iskandar Puteri, Johor,  
Malaysia