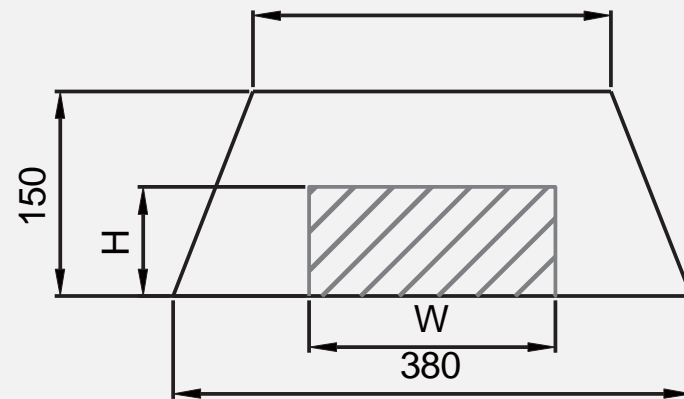


Dimensions and Appearance

Inspection Area



H	W
150	260
100	300
50	340
10	370
0	380

# RTX100L

Bagged food X-Ray Foreign Material Detection Equipment



**Corporate Office**

**RAY TECH SINGAPORE PTE LTD**

1 Tai Seng Avenue #05-09 (Taiseng Exchange – Tower A)  
Singapore 536464

**Factory**

**RAY TECH (MALAYSIA) SDN BHD**

2, Jalan SILC 4/1, Kawasan Perindustrian SILC, 7900 Iskandar Puteri, Johor,  
Malaysia

# RTX100L

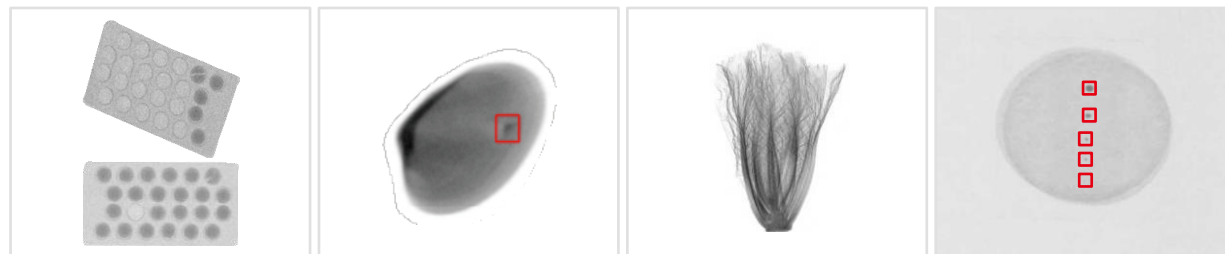


## Micro-focus X-ray Technology

### Features

- Easy to Operate: one button start&stop, optional default product
- Provide high precision automatic foreign material detection, It can effectively detect metal, ceramic, glass, bone, shell and other foreign materials in the product
- Monitoring, controlling, and improving procedures and outputs in manufacturing with SPC report
- With deep learning of AI, the detection sensitivity reaches the industry's highest Intelligent algorithm standard

### X-Ray Images



### Specifications

Dimension	960 (W) X870 (D) X1900 (H) mm	Detection Accuracy
Power Supply	AC 110/220V, 50/60Hz	SUS BALL $\geq\phi 0.3$ mm
Machine Weight	350kg	SUS wire $\geq\phi 0.2*2$ mm
X-Ray Voltage	80kV/210W	Glass ball $\geq\phi 1.0$ mm
Detector	0.2mm/0.4mm/TDI	Ceramic ball $\geq\phi 1.0$ mm
Channel Size	300mm (W) *150mm (H)	
Conveyor Speed	10-70m/min, 10-40 m/min (heavy load)	
Max. Loading Weight	5kg	
Operating Temperature	-10 °C-40 °C, 30%-90% RH, non condensing	
Human Machine Interface	15.6" touchscreen, Windows 10 operating system	
Reject Solutions	conveyor stop, air jet, swiping arm, pushing rod, retracting belt, flipper., etc.	
Human Machine Interface	15.6" touchscreen, Windows 10 operating system	
Port	1*Lan, 2*USB	
Other		
IP rating	Conveyor: IP66, Others:IP65	
X-Ray Emissions	<1 $\mu$ Sv/h	

\* Specifications are subject to change without notice, all trademarks are the property of the system maker.